

SYSC 3203
Project Title: EMG-Controlled Mouse
Milestone #3A: EMG signal filter / envelope detector

Raw EMG signals are often contaminated with DC and 60 Hz powerline interference signals. After rejecting the interference, the envelope (ie. shape) of the signal needs to be detected. Milestone #3A consists in designing a filter adapted for measuring an electromyographic (EMG) signal such as the one coming out of the instrumentation amplifier designed in the previous lab.

EMG signals typically have a frequency range from a few tens of hertz to a few kilohertz. Your task is to design a filter with the following specifications:

- Cut-off frequency: 180 Hz.
- > 40 dB rejection of 60 Hz powerline interference
- < 1 dB passband ripple
- Designed using only one OP297 which is a dual operational amplifier.

1. Filter design

- A. Sketch the filter requirements (gain versus frequency) corresponding to the specifications above.
- B. Using a Chebychev filter design, what filter order is required to meet the specifications?

Table 1: Sallen-Key filter design parameters

N	$F_s(40dB)$	$F_s(60dB)$	$F_s(80dB)$	f_n	G	f_n	G	f_n	G	f_n	G
FILTER = Chebychev 0.5dB											
2	12.16	38.46	121.62	1.231	1.842						
4	2.57	4.47	7.85	0.597	1.582	1.031	2.660				
6	1.62	2.26	3.24	0.396	1.537	0.768	2.448	1.011	2.846		
8	1.35	1.66	2.11	0.297	1.522	0.599	2.379	0.861	2.711	1.006	2.913
FILTER = Chebychev 2.0dB											
2	8.61	27.23	86.10	0.907	2.114						
4	2.21	3.76	6.61	0.471	1.924	0.964	2.782				
6	1.50	2.04	2.88	0.316	1.891	0.730	2.648	0.983	2.904		
8	1.27	1.55	1.95	0.238	1.879	0.572	2.605	0.842	2.821	0.990	2.946

The circuit of Figure 1 represents a Sallen-Key (VCVS) implementation of a second-order active HPF. In its simplest form with equal resistor and capacitor values i.e. $R_2 = R_1 = R$ and $C_2 = C_1 = C$, the response of the filter may be written in the form

$$T(\omega) = \frac{(j\omega CR)^2}{1 + (3 - G)j\omega CR + (j\omega CR)^2}$$

where the gain G is given by the usual non-inverting op-amp gain expression $G = 1 + R_4/R_3$.

- C. How many stages are required to implement this design using the Sallen-Key (VCVS) filter configuration (Figure 1)?
- D. Using the values in Table 1, calculate the gain and real-world cutoff frequency f_c required for each filter stage.
- E. Choose suitable values for the components $R_1, R_2, C_1, C_2, R_3, R_4$ for each stage of your design. **Note:** resistors and capacitors are only available with certain [preferred values](#) – try to choose values that give f_c and G as close as possible to your calculated ones.

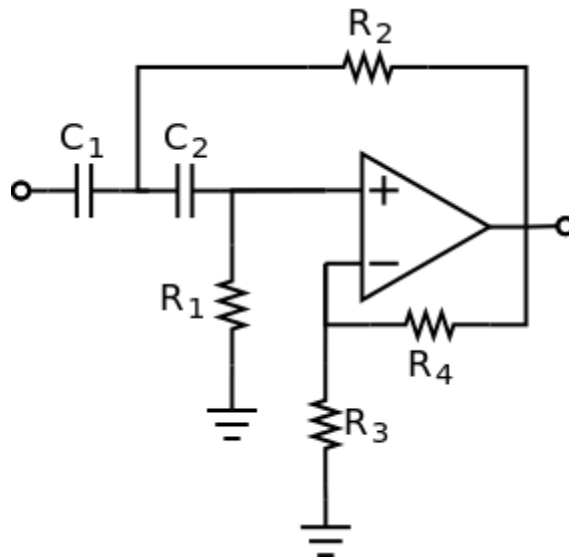


Figure 1: Sallen-Key active HPF implementation

2. Filter assembly and test

Once you have answered the above questions, assemble your design using an OP297 dual operational amplifier from your kit. Verify its operation using a function generator and an oscilloscope.

- Choose some frequencies at which to test the filter response – remember that you will want to test both the low frequencies ($\ll f_c$) and high frequencies ($\gg f_c$) but you should concentrate most of your measurement points in the frequency range where you expect the response to vary most rapidly versus frequency.
- At each of the chosen frequencies, measure the amplitude of the input signal and the amplitude of the output signal using the two available channels of the oscilloscope.
- What is the lowest frequency at which you can reasonably measure the filter response? What happens to the signal at very low frequencies?
- From your measurements, calculate how much rejection (in dB) the filter provides at the 60Hz powerline interference frequency. Does your filter meet the specification?

Show your testing results and assembled circuit to the instructor and have him/her fill and sign the instructor verification sheet.

Milestone #3A
SYSC 3203
Fall 2016
Instructor Verification Sheet

Submit this page to the lab instructor.

Name: _____ Student ID: _____

Name: _____ Student ID: _____

1.1: Explain the purpose of the filter and the choice of filter type, order, and cutoff frequency in the context of the EMG and interference signal.

Verified: _____ Date/Time: _____

1.2: Demonstrate to the instructor the proper operation of your filter.

Verified: _____ Date/Time: _____

1.3: Show the instructor your calculation of the amount of 60Hz rejection that your filter achieves.

Verified: _____ Date/Time: _____