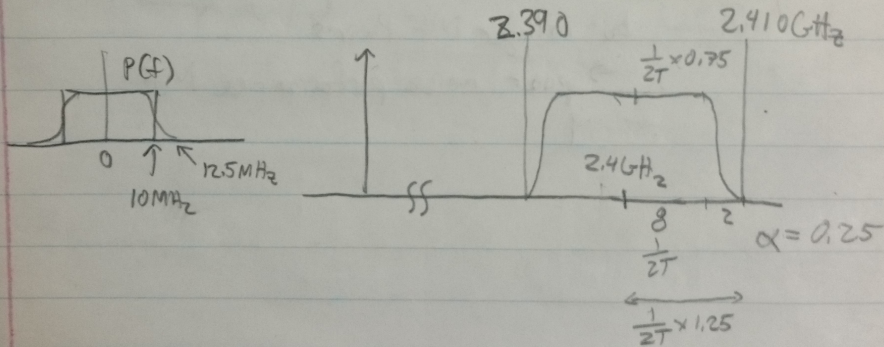
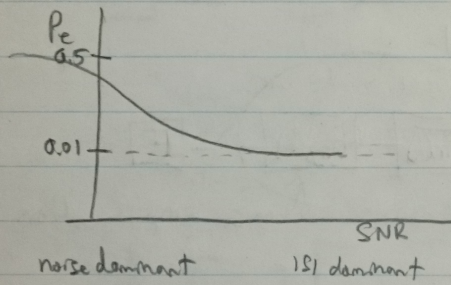
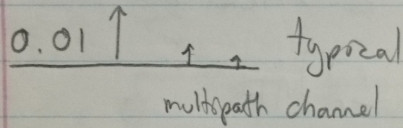
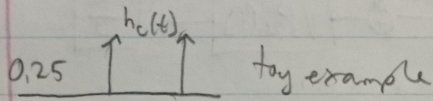


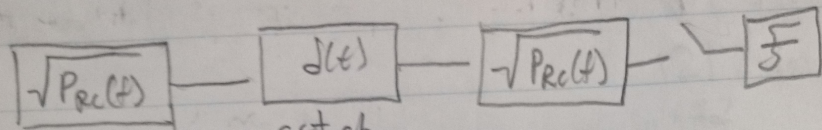
Lecture 17

Nov. 11 2015,

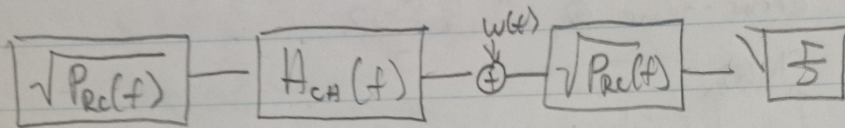
Noise, ISI
Self Interference

ISI: error-floor @ infinite SNR





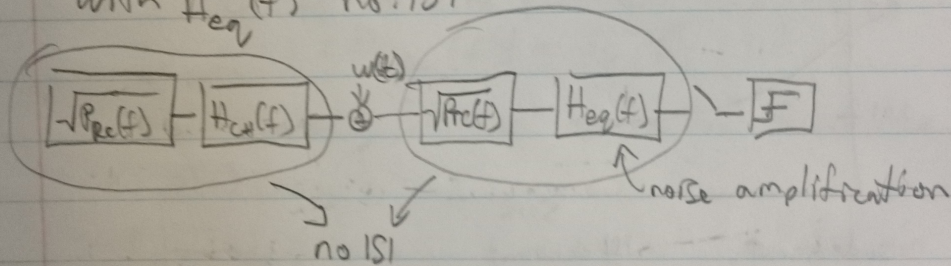
cut ch
 * no ISI
 * MF pair



$$\sqrt{P_{rc}(f)} H_{ch}(f) \sqrt{P_{rc}(f)} = P_{rc}(f) H_{ch}(f)$$

Introduce an equalizer after MF

with $H_{eq}(f)$ no ISI



but no longer MF Pairs

→ poor noise performance MF

